

A woman with curly blonde hair, wearing a light-colored top and jeans, stands on a stage, speaking into a microphone. She is gesturing with her right hand. The stage is lit with blue light, and the floor has a pattern of white lines. A large audience is seated in bleachers on both sides of the stage. A video inset in the upper center shows a close-up of the speaker. The background is dark with some light patterns.

ROADMAP TO BUILD A HOME FOR YOUR EVENT

HOUSE OF EVENTS HOME OF YOUR INDUSTRY



RAI Amsterdam is not just any place. It's a home for your event to thrive - the perfect place to connect, innovate, create impact and have a great time.

Our house is your home.
Welcome home. Explore the house.





PLAN YOUR ROAD TO SUCCESS

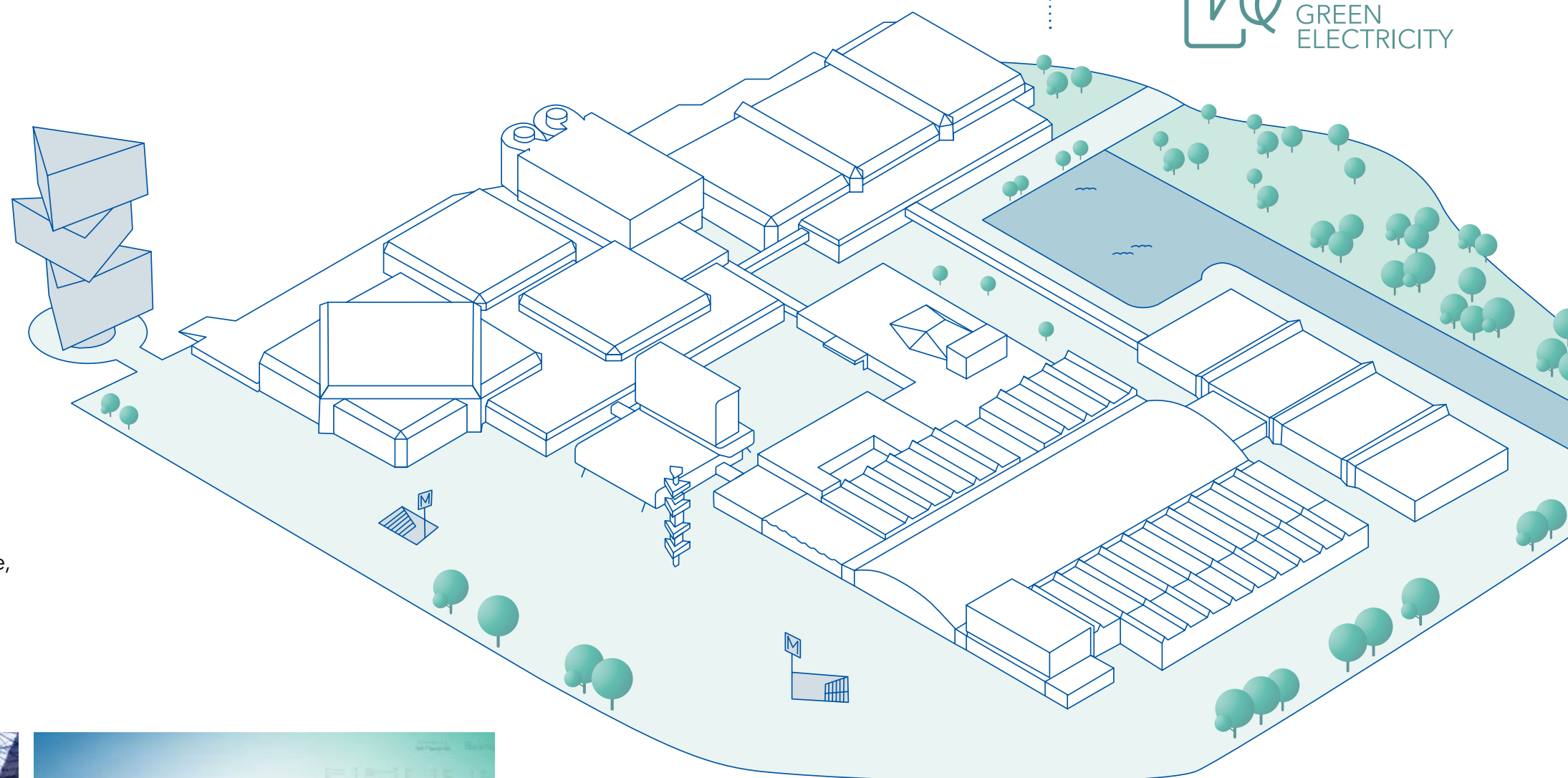
UNLOCK YOUR EVENT AND ENTER A WORLD OF POSSIBILITIES. RAI HOLDS THE KEY – JUST MAKE YOURSELF AT HOME.

RAI Amsterdam has a rich history. Founded in 1893 as a bicycle industry association, RAI has grown in just over a century to become a leading international trade event and conference organisation. Now, 130 years later, RAI remains a premier networking organisation and platform for key industries. With over 600 events a year, our portfolio still spans the Logistics & Smart Mobility sector and our expertise has broadened to serve and connect the world's leading industries.

Today, our mission is the same: to bring together people, ideas and organisations to share knowledge, stimulate innovation and support economic growth. RAI Amsterdam has also committed itself to the sustainable development of people and communities, the economy, and the environment.



OUR WELL-CONNECTED VENUE OFFERS 116,200 SQM OF HIGHLY
FLEXIBLE MEETING, EXHIBITION, BALLROOM AND PLENARY SPACE
- GIVING YOU A HEAD START ON YOUR EVENT PLANNING.



RAI AMSTERDAM IS THE GATEWAY TO THE CITY
WHERE THE WORLD MEETS AMSTERDAM AND
AMSTERDAM MEETS THE WORLD



12 MULTI-FUNCTIONAL HALLS

1 BALLROOM

3 INTERLINKED
CONFERENCE CENTRES

70 CONFERENCE &
MEETING ROOMS

2 AUDITORIUMS

5 RESTAURANTS

HARBOUR & URBAN BEACH



THE PERFECT HOME FOR YOUR EVENT

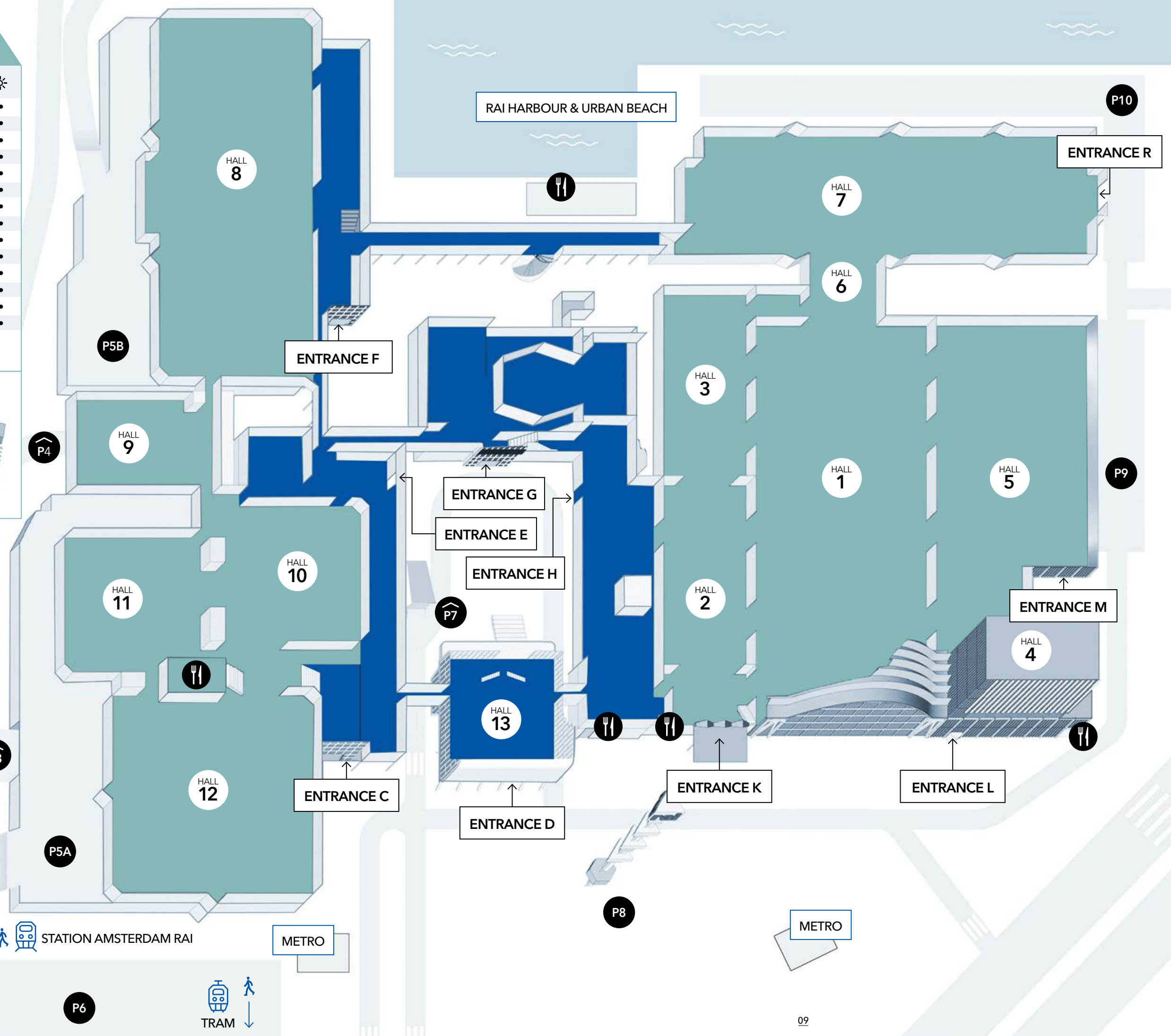
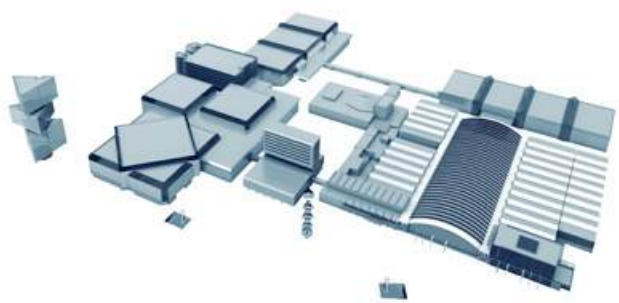
Together, we have the ability to spark your event and take your business to the next level, ensuring that everything is in place to exceed expectations. Our company and preferred partners respect and understand your mission and are therefore committed to providing you with the expert solutions and outstanding service you need.



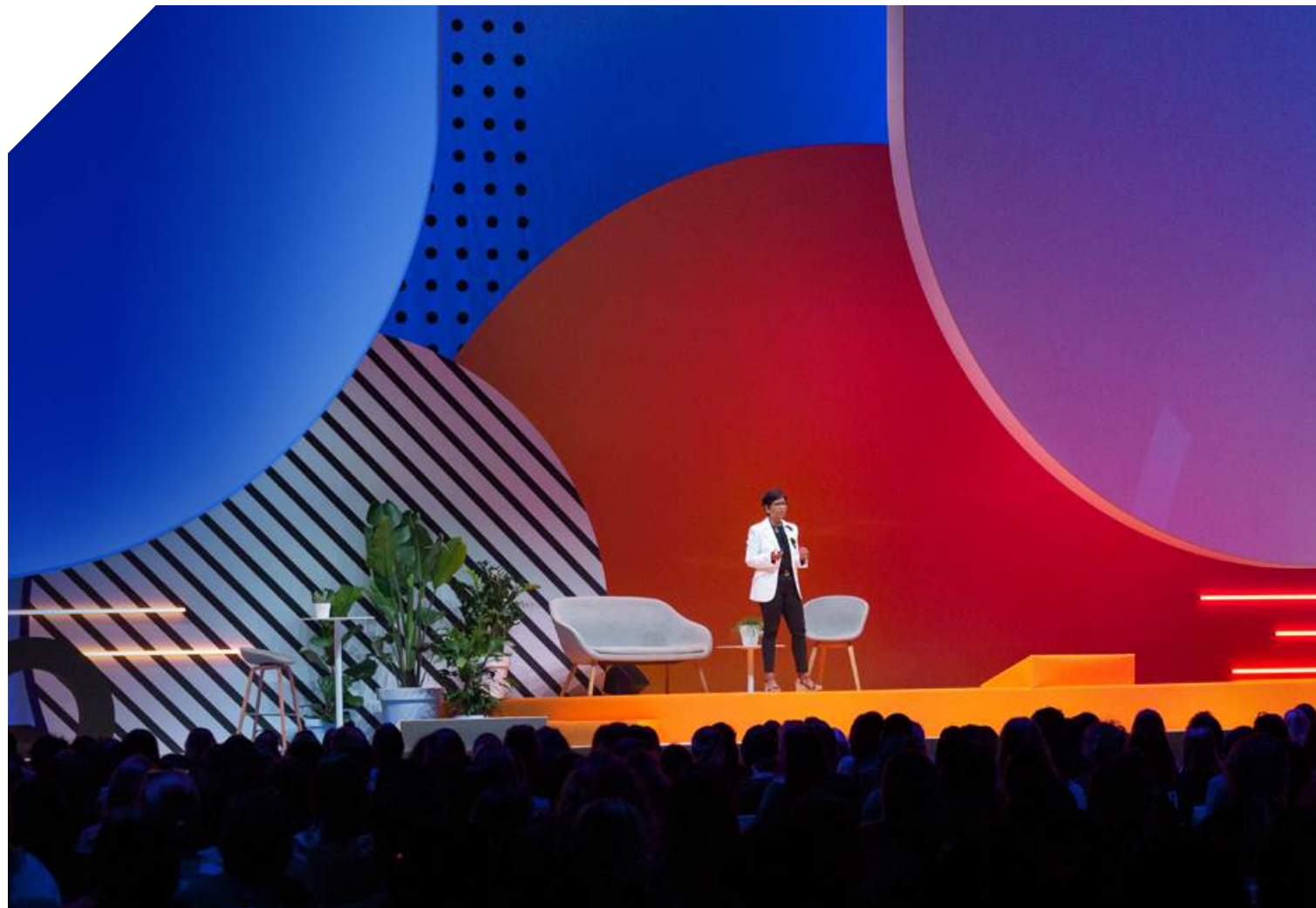
OVERVIEW HALLS

	M²	SQF	⦿	⦿	☀
Hall 1	15,000	161,459	6,900	10,000	•
Hall 1 + Balcony	18,240	196,334			•
Hall 2	4,060	43,701	1,840	3,500	•
Hall 3	3,920	42,195	1,600	3,500	•
Hall 4 > Amtrium	540	5,812	330	500	•
Hall 5	11,395	122,654	6,740	8,390	•
Hall 6	1,025	11,033			•
Hall 7	10,460	112,590	4,040	8,000	•
Hall 8	12,600	135,625	4,680	10,000	•
Hall 9	2,845	30,623	2,148	1,500	•
Hall 10	3,970	42,733	1,800	3,500	•
Hall 11	4,165	44,832	1,890	3,500	•
Hall 12	9,035	97,252	3,900	7,500	•
Hall 13 > Ballroom	1,985	21,366	1,070	2,000	•

Figures are guidelines, no rights can be derived from these figures.
 • = daylight available



nhow AMSTERDAM RAI HOTEL



A VENUE OF PERFECT CONNECTIVITY AND INFRASTRUCTURE

The entire venue, including halls & rooms, is interconnected and offers:

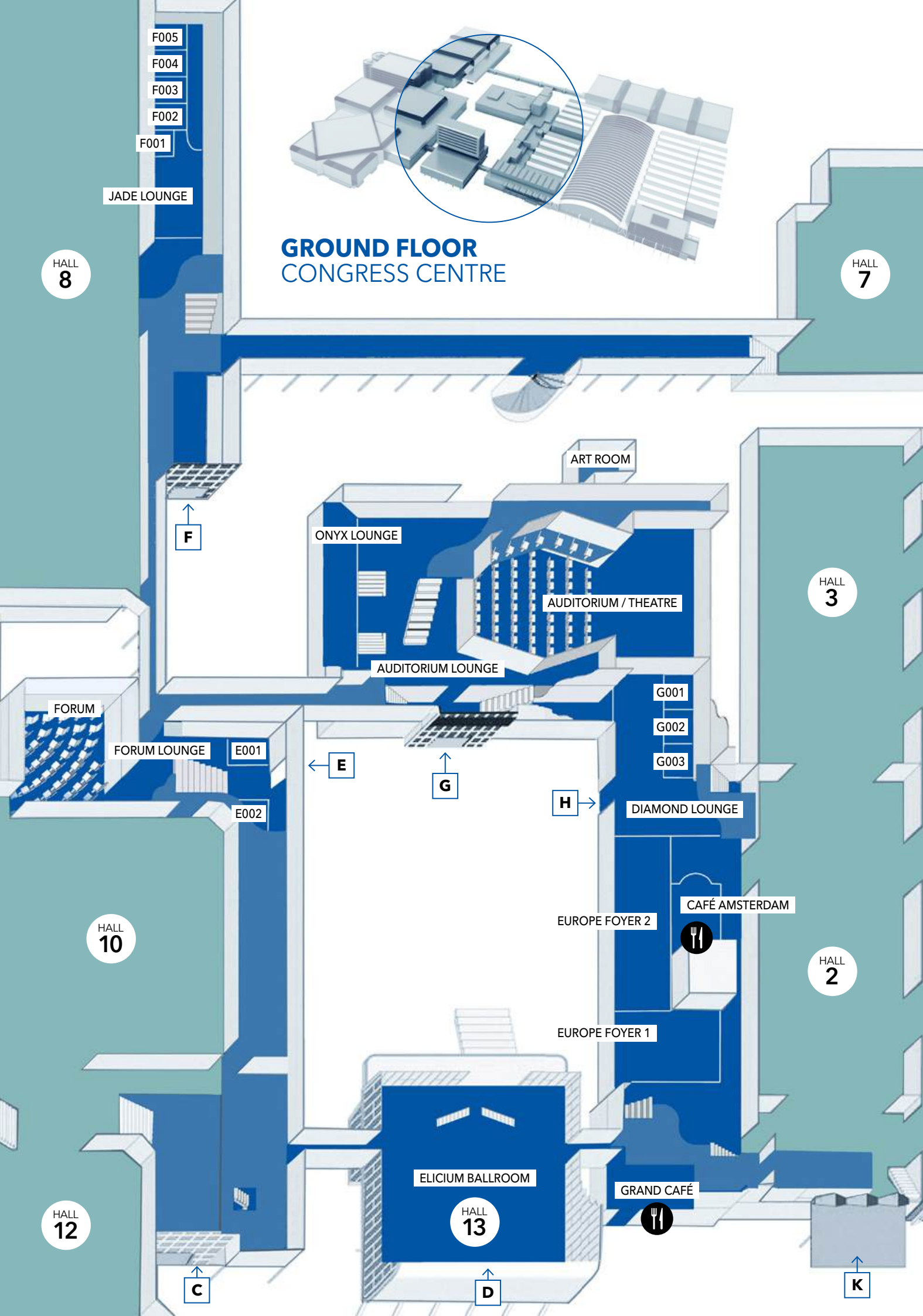
- 12 Multi-functional halls
- 1 Ballroom
- 3 Interlinked conference centers
- 70 Conference and meeting rooms
- 2 Auditoriums
- 5 Restaurants
- 1 Harbour pavilion with urban beach

The largest hall, Europahal, can accommodate up to 10,000 people and is a designated Rijksmonument.



The modular venue design – adapts to diverse event sizes and needs





GROUND FLOOR CONGRESS CENTRE & ELICIUM BALLROOM

ENTRANCE D - ELICIUM	[M ²]	[SqR]								
Elicium Ballroom	1,985	21,366	1,974	760	1,104	130		1,070		•
Elicium 1	869	9,353	700	288	462	92				•
Elicium 2	1,116	12,013	1,100	432	654	104				•

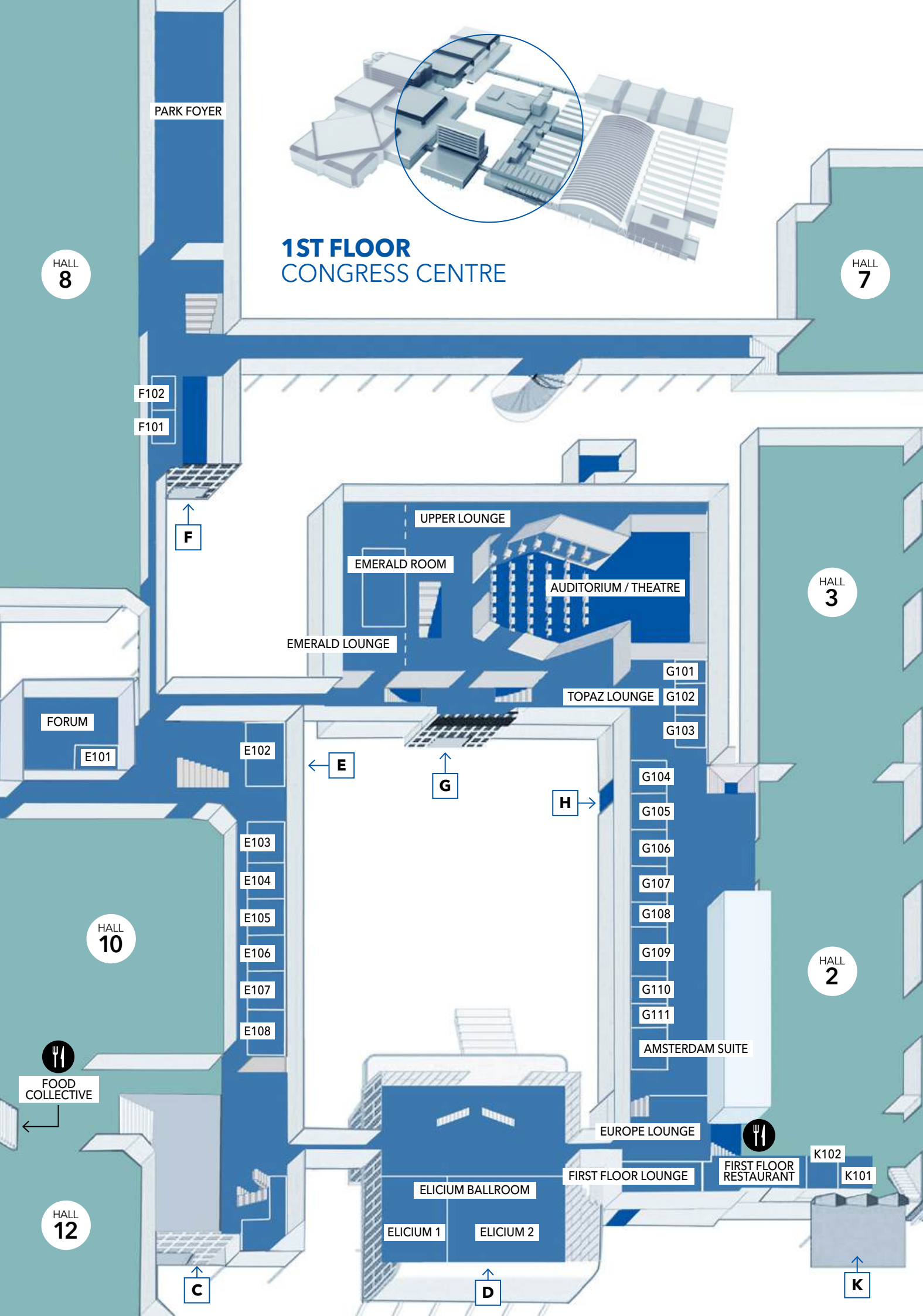
ENTRANCE E - FORUM CENTRE	[M ²]	[SqR]							
E001*	48	517					10		•
E002*	38	409					8		•
Forum	755	8,127	709						
Forum Lounge	1,120	12,056					390	500	•

ENTRANCE F - PARK CENTRE	[M ²]	[SqR]							
F001*	18	194					8		
F002	90	969	97	40	60	26	32	60	
F003	90	969	97	40	60	26	32	60	
F004	90	969	97	40	60	26	32	60	
F005	90	969	97	40	60	26	32	60	
F002-F003/F003-F004/F004-F005	180	1,938	176	84	120	40	52	96	
F002-F004/F003-F005	270	2,906	250	120	180	60	72	136	
F002-F005	360	3,875	318	160	252	80	92	208	
Jade Lounge	336	3,616						120	250

ENTRANCE G - AUDITORIUM CENTRE	[M ²]	[SqR]							
Onyx lounge	795	8,557						370	500
Auditorium Ground Floor + Balcony	1,500	16,146	1,732						
Auditorium Ground Floor	1,054	11,345	1,248						
Auditorium Lounge + Upper Lounge	2,660	28,632							•
Auditorium Lounge	1,600	17,222						496	1,250
Upper Lounge	1,060	11,410						470	700
Dressing Room 1-3	18	194							•
Artist Foyer*	88	947							•
G001	51	548	50	10	36	15	20	30	
G002	44	474	30	10	24	12	16	20	•
G001-G002	95	1,022	110	32	72	31	36	56	•
G003*	43	463					12		•
Diamond Lounge	745	8,019						240	500
Europe Foyer	1,833	19,730						1,030	1,250
Europe Foyer 1	1,163	12,518						730	750
Europe Foyer 2	670	7,211						410	500

RESTAURANTS	[M ²]	[SqR]		
Grand Café	480	4,359		200
Café Amsterdam	245	2,637		80

Figures are guidelines, no rights can be derived from these figures. *Fixed set up. **Only in combination with halls. • Available



1ST FLOOR CONGRESS CENTRE & ELICIUM BALLROOM

ENTRANCE C		[M²]	[SQM]									
Holland Lounge		310	3,336									•
ENTRANCE D - ELICIUM												
Elicium Ballroom		1,985	21,366	1,974	760	1,104	130		1,070			•
Elicium 1		869	9,353	700	288	462	92					•
Elicium 2		1,116	12,013	1,100	432	654	104					•
ENTRANCE E - FORUM CENTRE												
Ruby Lounge		424	4,564						220	250		•
E101		40	430					14				•
E102		239	2,573	240	102	138	42	60	120			•
E103		120	1,292	128	48	72	29	38	64-80			•
E104		124	1,335	128	48	72	29	38	64-80			•
E105/E106		80	861	70	32	48	22	28	40-50			•
E107		124	1,335	128	48	72	29	38	64-80			•
E108		120	1,292	128	48	72	29	38	64-80			•
E103-E104 or E107-E108***		244	2,626	288	96	138	42	64	140			•
E104-E105 or E106-E107***		204	2,195	216	80	114	40	60	100			•
E105-E106***		160	1,722	178	64	90	34	48	90			•
E103-E104-E105-E106-E107-E108***		648	6,975	704	256	366	98	160	360			•
ENTRANCE F - PARK CENTRE												
Park Foyer		1,600	17,222	1,433								•
F101**		94	1,011					14				
F102**		44	473					12				
ENTRANCE G - AUDITORIUM CENTRE												
Auditorium + Balcony		1,500	16,146	1,732								
Upper Lounge		1,060	11,410						470	700		•
Emerald Room		240	2,583	266	98	168	44	56	130			
Emerald Lounge		595	6,405						310	280		•
Dressing Room 4-8*		18	194									
Dressing Room 9*		27	291									
G101		35	377	24	10	12	16	16				•
G102		125	1,346	154	57	90	26	36	64			
G103		125	1,346	150	53	90	26	36	64			
G102-G103		250	2,690	300	114	186	54	64	128			
Topaz Lounge		495	5,328						190	250		•
G104		120	1,292	120	49	76	30	40	64			•
G105		120	1,292	120	49	76	30	40	64			•
G104-G105/G106-G107		240	2,584	279	110	170	54	68	128			•
G106		120	1,292	120	49	76	30	40	64			•
G107		120	1,292	120	49	76	30	40	64			•
G109		100	1,076	95	42	66	34	36	56			•
G108/G110/G111		45	484	32	18	18	14	16	24			•
Amsterdam Suite*		70	753					22				•
ENTRANCE K												
K101**		80	861					22				
K102**		80	861					22				
First Floor Lounge		205	2,207									•
Europe Lounge		282	3,035									
ENTRANCE R												
R101**		35	376					6*				
R102**		72	775					12*				
RESTAURANTS												
First Floor Restaurant		480	5,167					238				•
Holland Restaurant		640	6,888					220				

Figures are guidelines, no rights can be derived from these figures. *Fixed Seating. **Only in combination with halls.
*** Meeting rooms are flexible to fit your meeting requirements from 70 to 704 persons (flexible walls). • Available



BENEFITS FOR THE ENTIRE EVENT ECOSYSTEM

RAI VISION 2035 – ACCELERATING OUR PATH TO A SUSTAINABLE FUTURE

We aim to remain at the forefront of the events industry. Sustainability is at the top of our agenda – in terms of innovation, infrastructure development, circularity, economic value creation and positive global impact.

RAI Amsterdam is committed to addressing the most pressing global challenges of our time, calling on collaborative partnerships, creative thinking, and innovation to balance the three dimensions of sustainable development – economic growth, environmental sustainability, and social inclusion.

Our roadmap for the future, RAI Vision 2035, is the blueprint for our sustainable development and a comprehensive strategy that is inclusive, bold and solution-oriented. It also highlights the importance of linking our development to the advancement of the SDG agenda, and we integrate the 17 UN goals into all aspects of our business wherever possible. Today and in the future, we are committed to providing all organisations and audiences with the right environment for meetings and the right solutions to support a positive event footprint. So everyone can have a great experience, relax and feel safe and at home.



AMBITION RAI VISION 2035, A WELCOMING, ATTRACTIVE, LIVELY MEETING PLACE



URBAN MOBILITY HUB

On-site smart mobility services for an accessible, liveable and pollution free area



SMART LOGISTICS

Sustainable and 'silent' logistics to reduce noise & pollution with a smart logistics hub for less traffic congestion



GREEN & CIRCULAR OPERATIONS

Use of local suppliers & products, efficient integrated operation logistics and use of digitalisation grid



SMART REAL ESTATE DEVELOPMENT

Future proof infrastructure, which includes technological and digital innovations



MULTIDISCIPLINARY & HEALTHY COMMUNITIES

From a conference centre to a thriving, attractive neighbourhood where people enjoy meeting, living and working



BIODIVERSITY & GREEN

A vital landscape with improved air quality, reduced noise pollution and much more green



RENEWABLE & CARBON-FREE

Fully sustainable energy system, that meets all the needs with greater flexibility for distribution in the region



WATER MANAGEMENT

Installing green/blue roofs, water storage, underground rainwater management and grey water recycling system



HEATING & COOLING SOLUTIONS

Expansion of the current heat/cool system with focus on energy efficiency and renewable energy sources



The Elicium Centre features the Elicium Ballroom, four versatile conference rooms that can be combined to suit various needs, and 20 meeting rooms ideal for small-scale events such as training sessions and meetings, accommodating groups of 5 to 48 people.

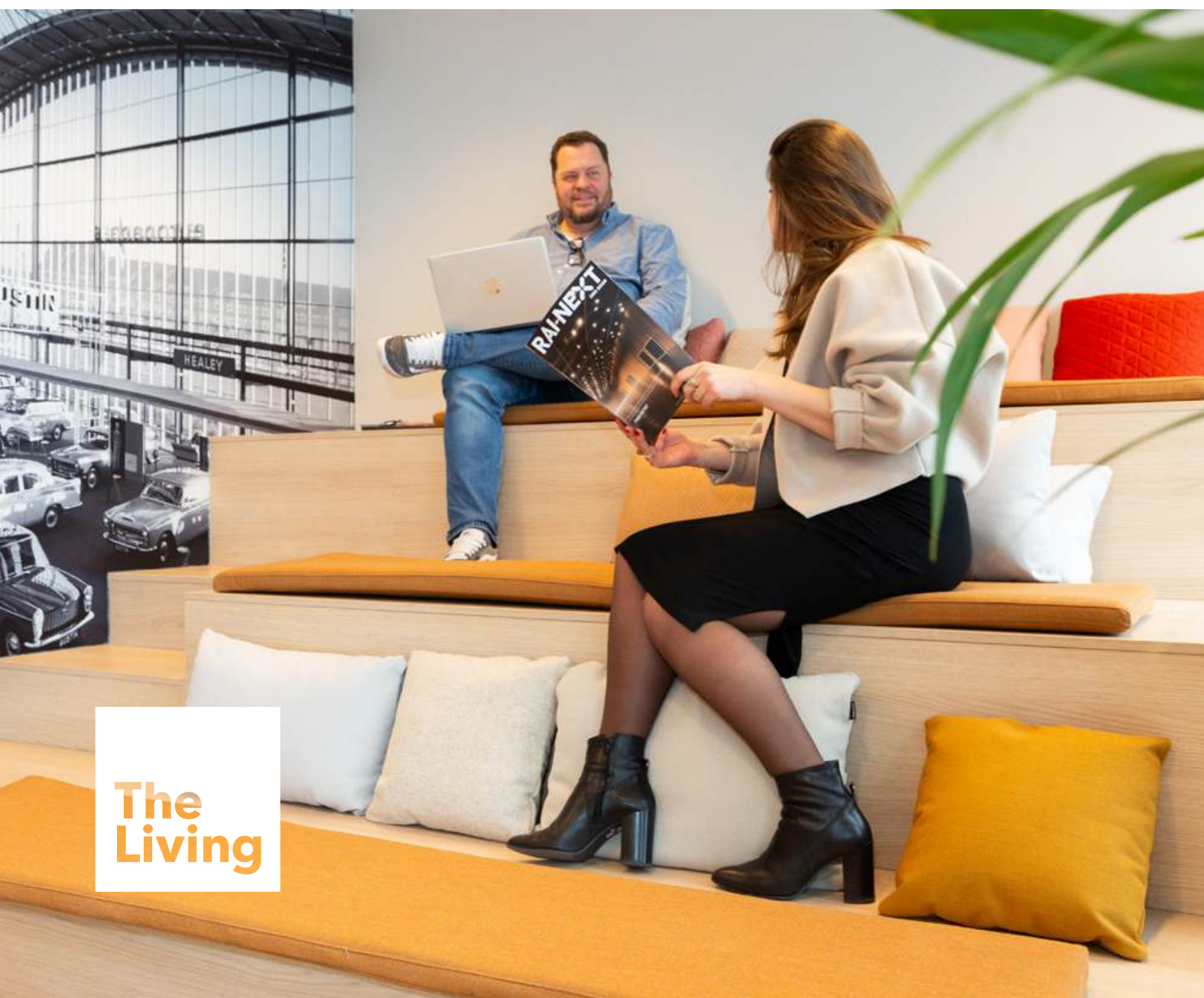




DISCOVER THE LIVING WHERE BUSINESS MEETS COMFORT

Situated on the third floor of the Elicium Centre, 'the Living' blends the warmth of a home with the functionality of a professional meeting space.

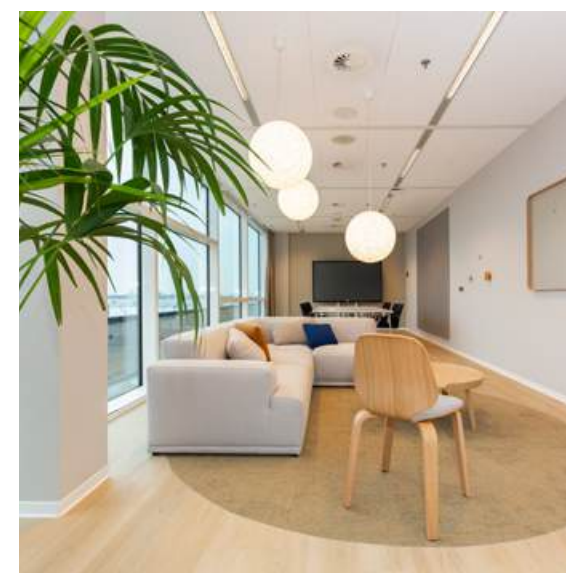
We offer flexible, open space that allows for business collaboration and meeting rooms for private sessions. To explore the possibilities, please feel free to contact us.



OUR HOUSE IS YOUR HOME

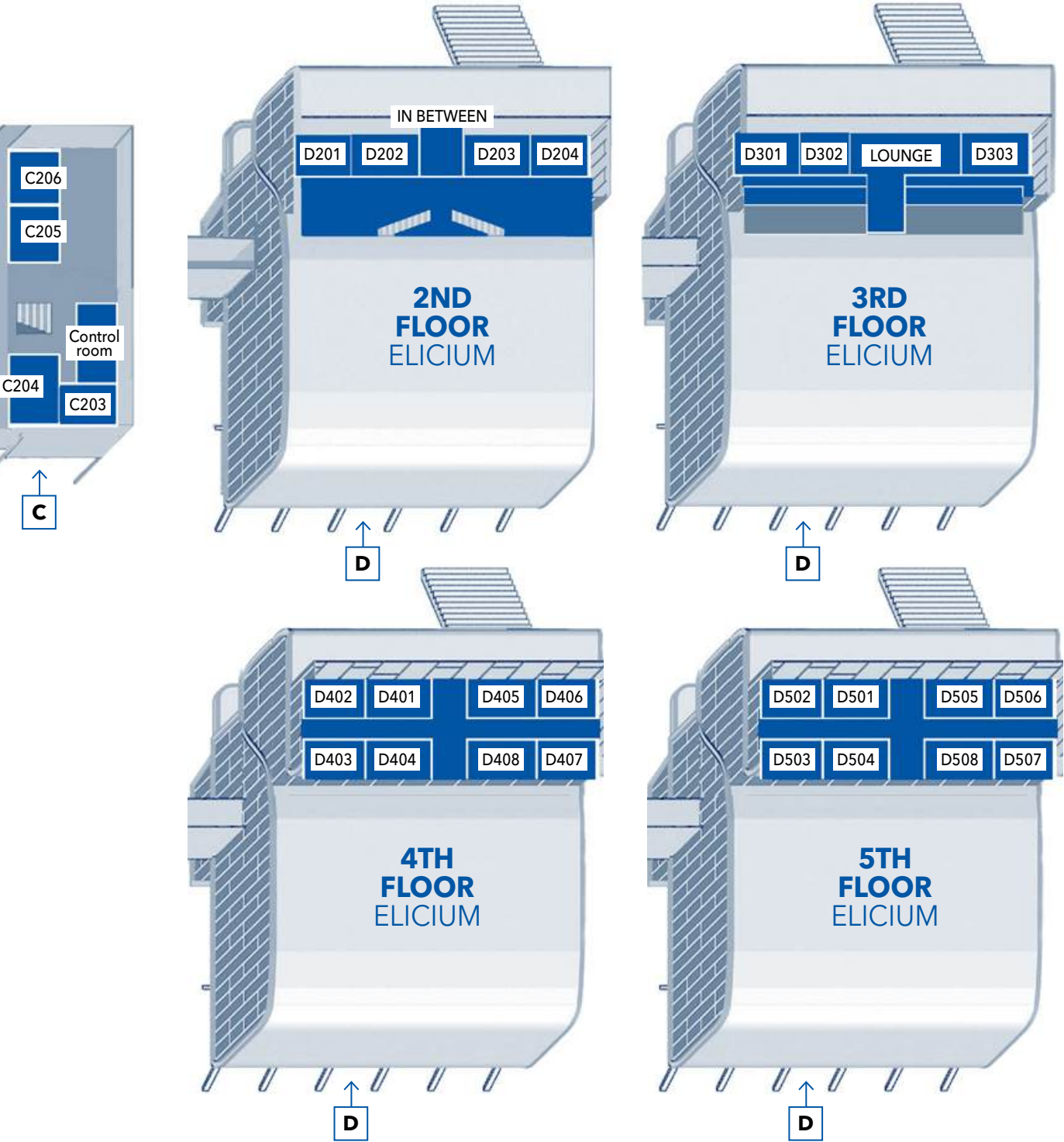
Rooms are thoughtfully designed, with excellent connectivity and modern meeting tools.

The comfortable furniture provides a relaxing yet professional setting. The Living is the perfect place to unwind during an event.



2ND FLOOR
ENTRANCE C

2ND/3RD/4TH/5TH FLOOR
ELICIUM



2ND FLOOR ENTRANCE C &
2ND/3RD/4TH/5TH FLOOR ELICIUM

ENTRANCE C	[M ²]	[Sqft]	⌵	⌵	⌵	⌵	⌵	⌵	⌵
C203*	75	807					12		•
C204*	58	624					18		•
C205**	34	366					8		
C206**	40	431					8		

ENTRANCE D - ELICIUM									
D201	105	1,130	94	30	42	22	28		•
D202	105	1,130	98	38	54	22	28		
D201-D202 / D203-D204	210	2,260	198	72	126	54	60	104	•
D203	105	1,130	98	38	54	22	28		
D204	105	1,130	94	30	42	22	28		•
D301	50	538					8*		•
D302	30	323					8*		•
D303	50	538					16*		•
D401	40	431	20	10	18	10	18		•
D402	50	538	28	14	24	18	26		•
D403	70	753	48	22	39	20	28		•
D404	50	538	35	18	30	16	22		•
D405	40	431	20	10	18	10	18		•
D406	50	538	28	14	24	18	26		•
D407	70	753	48	22	39	20	28		•
D408	50	538	35	18	30	16	22		•
D501*	40	431					11		•
D502	50	538	28	14	24	18	26		•
D503	70	753	48	22	39	20	28		•
D504	50	538	35	18	30	14	22		•
D505*	40	431					11		•
D506	50	538	28	14	24	18	26		•
D507	70	753	48	22	39	20	28		•
D508	50	538	35	18	30	16	22		•
In Between*	30	323					8		

Figures are guidelines, no rights can be derived from these figures. *Fixed set up. **Only in combination with halls. • Available





Amtrium Centre is a sustainable, multifunctional building that includes office spaces, conference rooms, and a restaurant with a rooftop terrace. It also includes a greenhouse-like climate zone with plants.

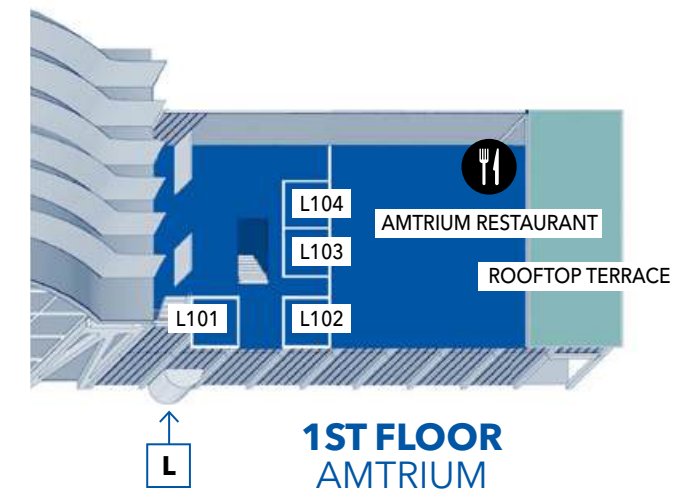
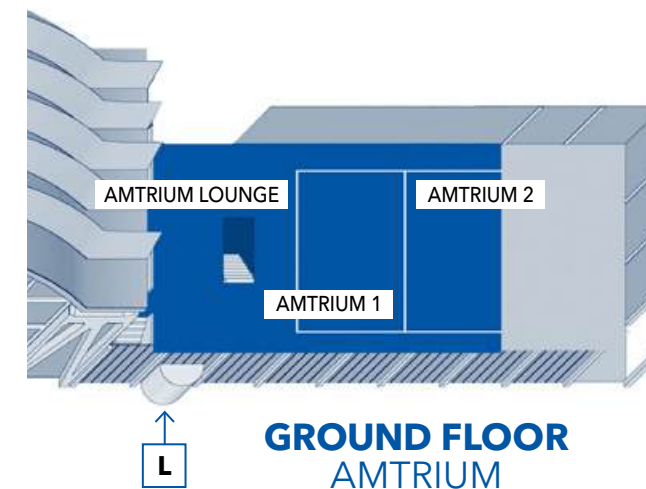
GROUND & 1ST FLOOR AMTRIUM 1 AND 2

GROUND FLOOR - AMTRIUM	[M ²]	[sqft]	🏢	🏢	🏢	🏢	🏢	☀️	☀️
Amtrium 1	275	2,970	305	128	168	48	64		
Amtrium 2	265	2,852	270	128	168	46	60		
Amtrium 1+2	540	5,812	500	194	294	84	108		
Amtrium Lounge	600	6,458							•
Amtrium incl. Lounge	1,140	12,271							•

FIRST FLOOR - AMTRIUM									
L101	32	344	27	8	12	10	16		•
L102	31	333	27	8	12	10	16		•
L103	53	570	56	14	30	14	20		
L104	53	570	61	14	30	14	20		
L103-104	106	1,140	126	36	70	24	36		
Lounge L1	267	2,874							•

RESTAURANT									
Amtrium Restaurant	538	5,791						250	•

Figures are guidelines, no rights can be derived from these figures.





AN EXCELLENT CHOICE - MAKE YOURSELF AT HOME

Welcome to nhow Amsterdam RAI, a place where contemporary art, design, gastronomy and cultural expression come together. Located next to RAI Amsterdam, the building is a city landmark with its iconic architecture, 91 metres in height and its 650 rooms on 25 floors. All rooms have great views of the surrounding cityscape. The roof terrace on the 17th floor offers breathtaking panoramic views of Amsterdam. For (inter)national organisers, exhibitors and visitors this is the perfect home base.



The hotel boasts a
BREEAM Excellent
certification



MIXING BUSINESS WITH LEISURE

Let us take you on a tour of our venue to discover a hidden gem. Tucked away in a quiet spot just behind the RAI, you will find Strandzuid, an urban harbour and a genuine urban beach. The place consists of a restaurant and an amazing floating terrace on the water. The relaxed atmosphere makes it the ideal place to relax and have a drink... with your feet in the sand.



Strandzuid
is open daily for lunch,
drinks or dinner



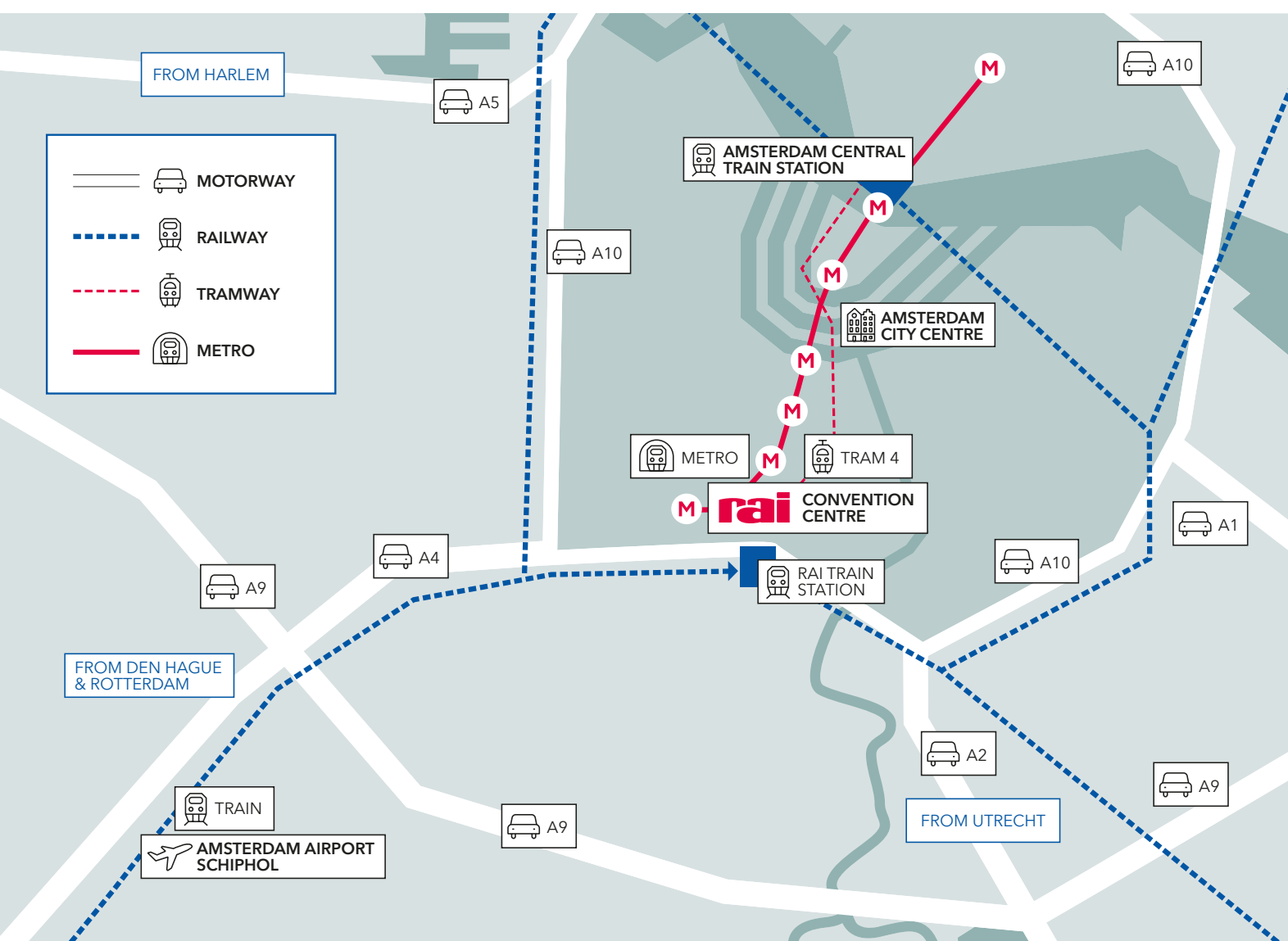


**BEAUTIFULLY
LOCATED
IN AMSTERDAM**

RAI AMSTERDAM IS EASY ACCESSIBLE BY METRO, TRAM, TRAIN AND ROAD.

A direct train line connects Schiphol International Airport to RAI in just 15 minutes. From our doorstep, the metro will take you to the vibrant city centre in only 6 minutes. From Amsterdam Central Station you will enjoy the convenience of direct connections to and from every major European city. RAI Amsterdam is also ideally located for visiting by car, situated just off the A10 south ring road – exit 9 leads directly to our venue and our 4,500 car parking spaces.

Welcome home. Discover our house.



#04
/25

HOUSE OF EVENTS HOME OF YOUR INDUSTRY



rai
AMSTERDAM

Our house is your home
Please feel free to contact us at
+31 (0)20 549 17 22
raimarketing@rai.nl
www.rai.nl