



PESTANA

AMSTERDAM RIVERSIDE

HOTEL & NATIONAL MONUMENT

COLLECTION HOTELS



LOBBY



THE HISTORICAL BUILDING

Rising above the hippest part of town, De Pijp, Pestana Amsterdam Riverside is a 5-star hotel in the heart of Amsterdam. Located in the former Town Hall and Archive building of the Amstel Community, it is a true National Monument. This historic hotel, near the Albert Cuypmarkt street market is the perfect hotel to visit one of Europe's most picturesque and exciting cities.

With a Spa including an indoor swimming pool, a sauna, a gym, 10 meeting rooms, a restaurant and bar, this hotel is your new home in Amsterdam.

Enjoy a sophisticated and intimate experience in a 5-star historic hotel at the riverside of the Amstel River in Amsterdam.



LOCATION

Pestana Amsterdam Riverside is located in the bustling district of 'De Pijp'. This area offers many restaurants and is enriched with a remarkable history. See how diamond cutters are at work in the diamond factory and don't forget to learn about the rich brewing history of the district in the Heineken Experience.

Once in Amsterdam, enjoy some world-class museums, such as the Hermitage Amsterdam, Rijksmuseum, Stedelijk Museum, Van Gogh Museum and Madame Tussauds Amsterdam, or rent a bike to have the true Dutch experience. Known as the "The Venice of the North", the Amsterdam canals are one of the main attractions of the city.

Book a boat cruise and get fascinated by the Amsterdam environment. Visit the popular Flower Market, and at the end of the day relax in one of the parks all over the city such as the Vondelpark, Amstelpark or Westerpark or enjoy a performance in Koninklijk Theater Carré or the Concertgebouw.

TRANSPORT LINKS

- ▮ Amsterdam Airport Schiphol - 16 km
- ▮ Central Train Station - 5 km



ROOMS

154 bedrooms and suites reflect a comfortable and warm design.

All rooms have a different atmosphere and environment, and are located in the Monumental Building, the Archive Building or in one of the new wings. Each building adds its own identity to the rooms and suites and provides an individual and unique experience.

ROOM TYPOLOGY

Deluxe

Premium Deluxe

Superior

Superior Terrace

Superior River View

Studio

Premium River View

Loft

Comfort Studio

Junior Suite River View

Mezzanine Suite

Clock Tower Suite

Presidential Suite River View

Master Presidential Suite River View



DELUXE ROOM

Located in one of the monumental buildings or the new River House, the Deluxe rooms combine the best of Amsterdam history with the elegance and modernity of a new hotel.

This room type can accommodate up to two guests, offer a King size bed, complimentary use of a coffee and tea machine and a bathroom with a spacious walk-in shower.

A crib to accommodate a maximum of one child up to 3 years old is available upon request.

SUPERIOR ROOM



SUPERIOR ROOM

The elegant and modern Superior rooms accommodate two guests in a King or Twin bed upon request.

A sofa bed, to accommodate a maximum of one child up to 12 years old, is available upon request.

A crib is also available for one child up to 3 years old.

The room offers complimentary use of a coffee and tea machine and a bathroom with a walk-in rain shower.



STUDIO

Our Studios, located in the annex building the “River House”, can accommodate two guests in a King size bed.

They, offer a kitchenette equipped with a microwave, a fridge and a coffee and tea machine.

The separate bathrooms are equipped with a comfortable walk-in shower.

A sofá bed is available upon request to accommodate a maximum of two children up to 12 years old. A crib is also available for one child up to a 3 years old.





JUNIOR SUITE



JUNIOR SUITE

Our spacious and modern Junior Suites ensure a comfortable stay in the city.

This room can accommodate up to two guests in a King bed, provide complimentary use of a coffee and tea machine and the bathroom is equipped with a walk-in shower and a freestanding bathtub is available upon availability.

A crib to accommodate a maximum of one child up to 3 years old is available upon request.

MEZZANINE SUITE



IN ROOM AMENITIES

TV LCD
High speed Internet – Wireless
Amenities by Castelbel
Hairdryer
Safe (laptop size)
Coffee and tea maker
Minibar in all rooms
Air conditioning
All rooms are non-smoking

154 rooms:
22 suites
1 Presidential suite
30 Twin rooms
17 rooms with bathtub
25 rooms with separate toilet
6 rooms with balcony
2 rooms with terrace
1 room for disabled
5 connecting rooms
26 studios with microwave and fridge



SPA

FACILITIES AND SERVICES

SPA, gym and indoor swimming pool

Restaurant & Bar

8 Meeting Rooms

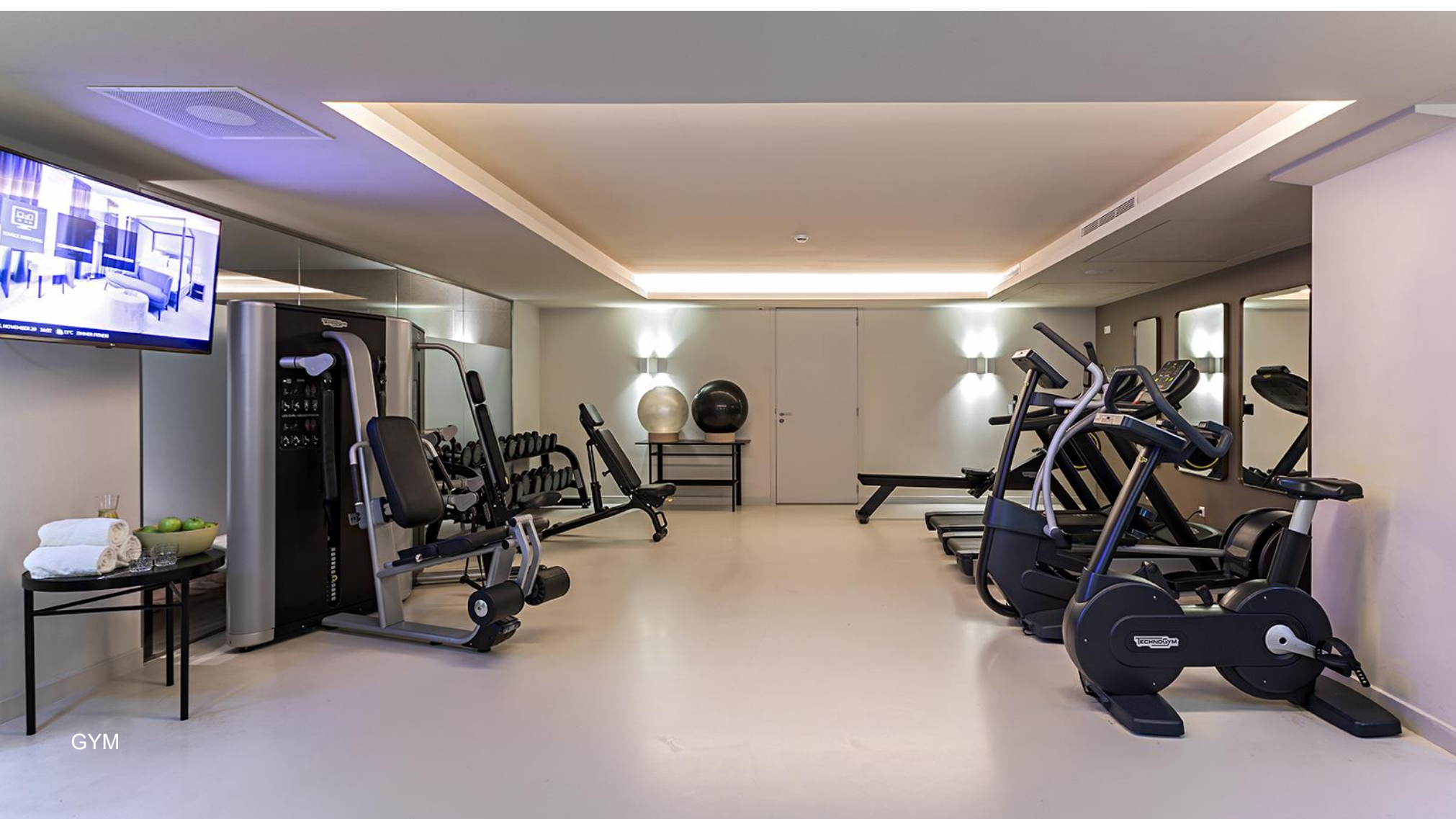
Parking – Valet Parking (surcharge applicable)

Airport transfers available (surcharge applicable)

Room service available 24 hours (surcharge applicable)

Bike rental (surcharge applicable)

Laundry (surcharge applicable)



GYM

TOWN HALL BALLROOM



TOWN HALL BALLROOM

The Town Hall Ballroom is located on the second floor of the Monument building and has its original architecture facing the Amstel river.

The room can be decorated as a living room for the Presidential suite. It is also the perfect place for exclusive banquets, charity balls, wedding and cocktail parties or even a more intimate celebration up to 70 guests.



MEETING ROOMS

With 4 spacious rooms (The Americas) of total 220m² can be combined to suit a large gatherings and 3 bright board rooms for 10 guests, we can fit any business traveler's needs, whether for a small meeting or a large conference.

Located on the Diamond building, all on the ground floor, with 3 meters height and with natural daylight, the 7 private meeting rooms can be easily configured for a variety of business gatherings and events, to create a lavish yet comfortable ambiance, which lends an air of intimate formality to any meeting.

You can find more information about these meeting rooms in the back of this brochure.



TOWN HALL



MEETING LOBBY



BANQUET



CONFERENCE

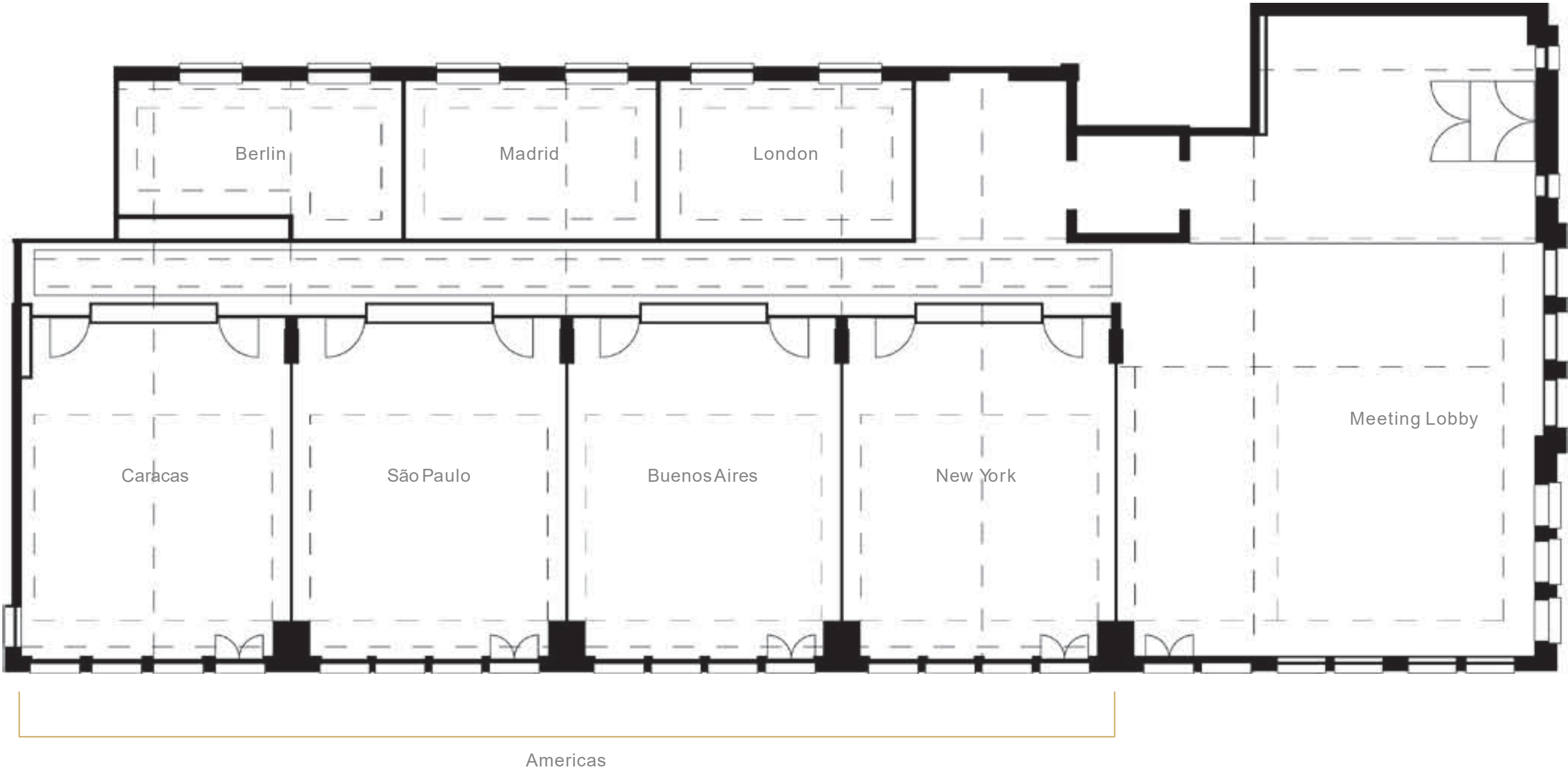


THEATER



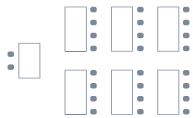

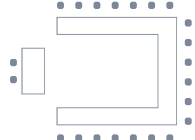


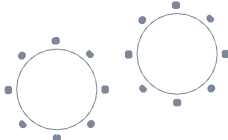

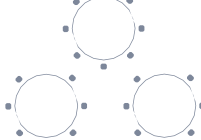
U- SHAPE

FUNCTION ROOMS
Ground floor of the Diamond Building



CAPACITY



ROOMS	CLASSROOM	HOLLOW	U-SHAPE	THEATER	RECEPTION	BANQUETING	BOARDROOM	CABARET
								
TOWN HALL	41	32	25	60	70	50	20	32
LONDON	-	-	-	20	20	-	10	-
MADRID	-	-	-	20	20	-	10	-
BERLIN	-	-	-	20	20	-	10	-
THE AMERICAS 1/4	25	24	21	40	50	30	18	24
THE AMERICAS 2/4	49	40	35	80	100	70	28	48
THE AMERICAS 3/4	67	56	51	120	150	110	42	72
THE AMERICAS 4/4	79	72	67	160	200	150	54	96



RESTAURANT



ARCHIVE by Pestana

Welcome to Archive by Pestana, where each dish is a chapter in Portugal's rich culinary history.

Here, we invite you on a journey, exploring the timeless flavors that have defined Portuguese cuisine for generations. Our chefs delve into the archives, uncovering classic recipes and reimagining them for the modern palate.

We believe that the essence of any great dish lies in its ingredients.

That's why we take pride in sourcing the freshest seasonal and local produce, ensuring that every bite captures the true spirit of Portugal. We hope you enjoy this taste of history, lovingly crafted for the present day.

Bom apetite!



TERRACE



PESTANA AMSTERDAM RIVERSIDE

Amsteldijk 67

1074 HZ Amsterdam

T: +31 20 220 6904

E: groups.amsterdam@pestana.com

pestanacollection.com

